



THREE PASS WET-BACK PACKAGED SCOTCH BOILERS

■ HURST "PERFORMANCE" BOILERS ■

OHIO SPECIAL

Available with...LOW NOx

Capacities from 100 to 225 H.P.
3347 to 6695 MBTU/HR.

UL Approved Forced Draft Burners

- Efficient 3-Pass Wet Back Design
- Hinged Doors on Front & Rear Smoke Boxes for Easy Service
- ASME Code Constructed & Stamped For Pressures to 300 PSI
- Registered With The National Board of Boiler Inspectors
- Low Furnace Heat Release
- Large Furnace Volume For Ultimate Combustion Efficiency
- Steel Skids and Lifting Eyes
- U.L. Listed Controls & Trim
- Competitively Priced, Easily Maintained, Designed For Efficiency
- Flame Observation Ports - Front & Rear
- Factory Insulated
- Factory Jacketed & Painted
- Easy Access to Fireside Surfaces
- Ample Water Side Cleanout Openings
- Fully Automatic Operation
- U.L. Listed, Forced Draft Burners
- Fuel Flexibility – Gas, Oil and Combination Gas/Oil



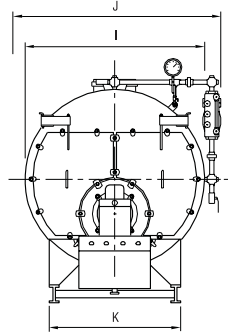
STANDARD FEATURES – OHIO SPECIAL SERIES

All units are factory packaged with operating controls, relief valves, burner and fuel train. Installation is made simple in that only service connections are needed to place in operation. Flexible burner systems are available for firing natural gas, LP gas, #2-6 oil or combinations. High density mineral wool insulation assures lower radiant heat loss. In addition to meeting the requirements of UL, burner systems are optionally available to meet the requirements of FM, IRI, CSD-1 and others.

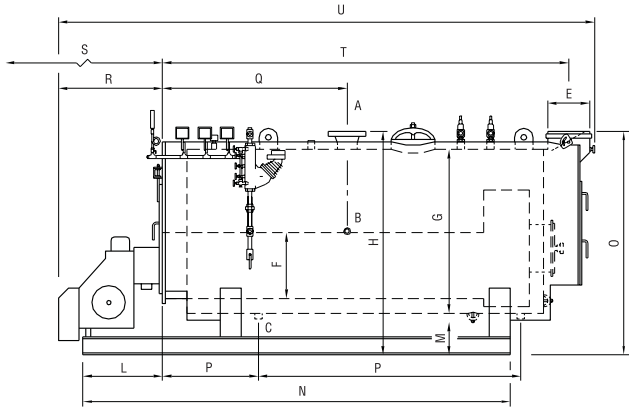
STEAM TRIM: Steam pressure gauge with syphon and testcock; probe type combination low water cutoff and pump control (or feeder); water column gauge glass set and drain valve; probe type Aux. L.W.C.O.; ASME safety relief valve(s); operating, high limit and modulating pressure controls.

OHIO SPECIAL

Designed, constructed and stamped in accordance with the requirements of the ASME Boiler Code.



FRONT VIEW



RIGHT SIDE VIEW

BOILER SPECIFICATIONS

ALL DIMENSIONS ARE IN INCHES

DIMENSIONS SUBJECT TO CHANGE WITHOUT NOTICE, CERTIFIED DRAWINGS AVAILABLE UPON REQUEST.

BOILER HORSEPOWER		100	125	150	175	200	225
HEATING SURFACE (FIRESIDE)	SQ. FT.	358	358	358	358	358	358
STEAM OUTPUT, FROM & AT 212° F.	LBS./HR.	3450	4313	5175	6037	6900	7762
GROSS OUTPUT	MBH	3348	4184	5021	5858	6695	7532
FIRING RATE, GAS (1,000 BTU/CF)	CFH	4200	5250	6300	7350	8400	9450
FIRING RATE, LP GAS (91,500 BTU)	GPH	46	57	69	80.5	92	103
FIRING RATE, #2 OIL (140,000 BTU)	GPH	29.9	37.4	45	52.5	60	67.3
FIRING RATE, #5 & 6 OIL (150,000 BTU)	GPH	28	35	42	49	56	63
A NOTE: 1 STEAM OUTLET SIZE	150 PSI	4	4	4	4	4	4
A NOTE: 2 STEAM OUTLET SIZE	15 PSI	8	8	8	8	8	8
B FEEDWATER CONNECTION SIZE		1 1/4	1 1/4	1 1/4	1 1/4	1 1/4	1 1/4
C BOTTOM BLOWDOWN SIZE	HIGH PRESS.	1 1/2	1 1/2	1 1/2	1 1/2	1 1/2	1 1/2
D BOTTOM BLOWDOWN SIZE	LOW PRESS. STM.	2	2	2	2	2	2
E STACK OUTLET SIZE O.D.		16	16	16	16	16	16
F FURNACE O.D.		32	32	32	32	32	32
G SHELL I.D.		60	60	60	66	66	66
H SUPPLY HEIGHT		81 3/4	81 3/4	81 3/4	88 3/4	88 3/4	88 3/4
I WIDTH WITHOUT TRIM		66.5	66.5	66.5	72.5	72.5	72.5
J WIDTH WITH TRIM		79	79	79	85	85	85
K SKID WIDTH		48	48	48	51	51	51
L END OF SKID TO FRONT PLATE		26 1/4	26 1/4	26 1/4	26 1/4	26 1/4	26 1/4
M SHELL TO FLOOR		15	15	15	16	16	16
N SKID LENGTH		144	144	144	144	144	144
O STACK OUTLET HEIGHT		82	82	82	89	89	89
P BLOWDOWN LOCATIONS		27 13/16-78	27 13/16-78	27 13/16-78	27 13/16-78	27 13/16-78	27 13/16-78
Q STEAM OUTLET LOCATION, (15 PSI & UP)		62 5/16	62 5/16	62 5/16	62 5/16	62 5/16	62 5/16
R BURNER PROJECTION, (FROM FRONT PLATE)		44	44	44	44	44	44
S TUBE REMOVAL, FRONT		121	121	121	121	121	121
T STACK OUTLET LOCATION		136 13/16	136 13/16	136 13/16	136 13/16	136 13/16	136 13/16
U APPROX. OVERALL LENGTH (STD. BURNER)		192	192	192	192	192	192
APPROXIMATE SHIPPING WEIGHT-150 PSI	LBS.	10050	10050	10150	10850	10850	10850
APPROX. SHIPPING WEIGHT-15 & 30 PSI	LBS.	9250	9250	9350	10050	10050	10050
WATER CAPACITY AT NWL	GAL.	685	685	685	893	893	893
WATER CAPACITY FLOODED	GAL.	885	885	885	1187	1187	1187

NOTE 1: 300# ANSI FLANGE
NOTE 2: 150# ANSI FLANGE

100 HP & LARGER HAS 12" X 16" MANWAY
X = OVER ALL LENGTH MAY VARY WITH BURNER SELECTION

hurstboiler.com



P. O. Drawer 530
21971 Highway 319 N.
Coolidge, Georgia 31738
Toll Free: 1-877-994-8778
Tel: (229) 346-3545
Fax: (229) 346-3874
Email: info@hurstboiler.com

Represented by: